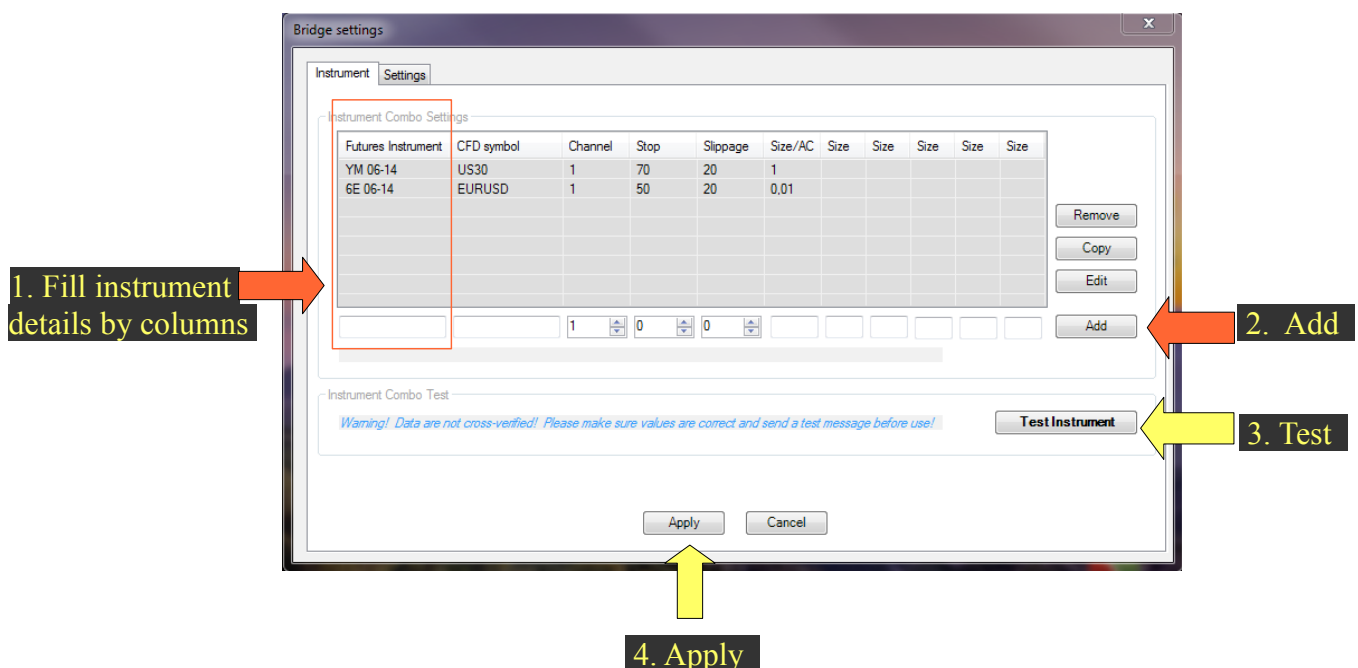


Main Module QUICKSTART *for the experienced users*

1. Import *Nt7BridgeHead_version.zip* to Ninja Trader
2. **Copy** the contents of [MQL4] folder to
(from build 608) *C:\Users\[name]\AppData\Roaming\MetaQuotes\Terminal\[id of your MT4]*
3. Attach **Nt7BridgeHead** the tool to any NinjaTrader chart, on any workspace.
4. Attach MtBridgeHead_version to ONE Mt4 chart ONLY! Doesn't matter on which one.
There must be ONLY ONE bridgeHead running in MT4, doesn't matter on what chart
5. Start the settings menu of the tool in NinjaTrader by doubleclicking left from the size buttons (probably a 0) on a chart, where the tool is attached and follow the 4 steps below:



6. You can now choose a control mode in the settings tab.

A) Autocopy: it will copy your positions from NT7 to MT4. PLEASE READ **PAGE 6** for more info

B) Manual interface (recommended): you can manually control MT4 from NT7

Available modes:



B: buy, **S**: sell, **C**: close, **X**: INSTANT close all open positions on instrument, **0**: cancel all tool-orders

You can now use the tool by selecting a mode and pressing your set Control Key (Shift by default) + left click on the chart.

You can modify your orders by middle click on them. You can cancel an order by issuing a negative size, by issuing opposite order, or clicking when no mode is select on the level of the order.

The placed orders on your Ninja charts are **Virtual orders**. This means that NT7 monitors the set levels, and when they are hit, an instant market order is sent to MT4. The orders are not placed on MT4.

Feedback Module QUICKSTART

The module is optional and separate!

1. Attach *MtBridgeHead_version* to a NEW MT4 chart and to ONE Mt4 chart ONLY!
Doesn't matter which one!

There must be ONE bridgeHead and ONE bridgeFeedback running in MT4,
doesn't matter on what chart

2. There are no steps to be taken in Ninja Trader 7: feedback is automatic if detected.

DETAILED: Install/Copy

1. Unzip the downloaded file *NtMtBridge_version.zip*

2. [NinjaTrader part](#)

DO NOT unzip *Nt7BridgeHead_version.zip*

Start your NinjaTrader Control Center

Navigate to *File - Utilities > Import NinjaScript...*

Choose *Nt7BridgeHead_version.zip* and press open

A popup should let you know, that the import was successful.

3. [MT4 part:](#)

Copy the contents of **[YourMT4directory]** folder (*post build 608*)
to *C:\Users\[name]\AppData\Roaming\MetaQuotes\Terminal\[id of your MT4]*
The id can be checked by looking into the „origin.txt” file within the folder.

This will copy three files:

<i>MtBridgeHead_version.ex4</i>	into MQL4\scripts\
<i>MtBridgeFeedback_version.ex4</i>	into MQL4\scripts\
<i>NtMtBridgeDLLversion.dll</i>	into MQL4\libraries\

Run your MT4 software

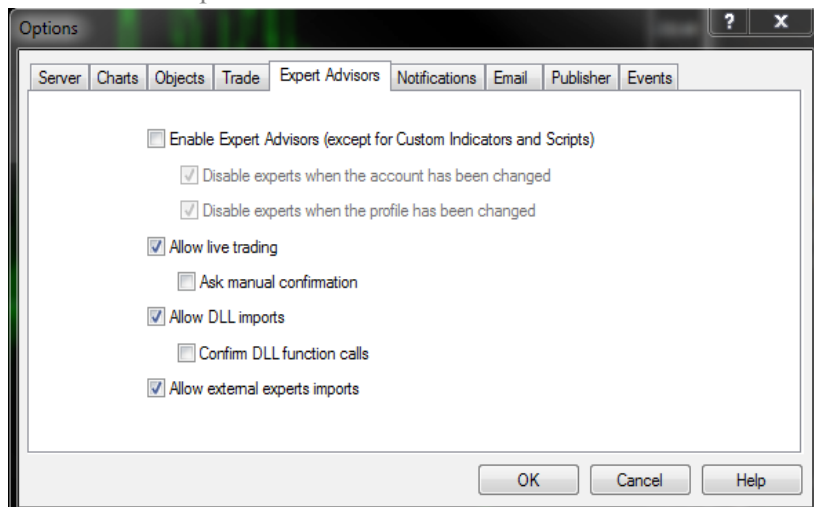
Go to Tools - Options

your Expert Advisors tab should look like this:

Allow liveTrading & Allow DLL imports on

Ask manual Confirmation & Confirm DLL calls off

the rest is not important



DETAILED: Running the scripts

1. NinjaTrader part

RightClick on any chart - Indicators... - Select *Nt7BridgeHead* from your list, doubleClick it.
The indicator stays attached to that chart until you remove it.

You can attach the indicator to any charts, including different timeframe of the same instrument, even on different workspaces!

You should see this in the upper-right corner of your NinjaTrader chart:



2. MT4 part:

In the Navigator Panel expand the Scripts tab. You'll find *MtBridgeHead_version* there.
You need to make this step each time you re-start your MT4 platform: scripts don't stay attached!

⚡ WARNING ⚡

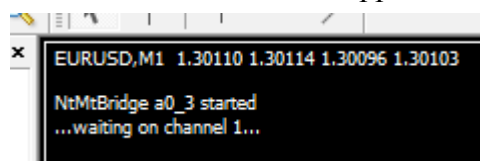
Drag&Drop the script to ONE and ONLY ONE chart!
It is NOT important to which one!

There must be ONLY ONE script running in MT4, doesn't matter on what chart

DO NOT attach the script to another chart (there must be only one listening thread).

DO NOT remove the running script. It is safer to close MT4 if you want to remove it

You should see this in the upperleft corner of your MetaTrader chart:



3. MT4 Feedback Module (The module is optional and separate!)

Drag & Drop *MtBridgeHead_version* to a NEW MT4 chart and to ONE Mt4 chart ONLY!
Doesn't matter which one! So you'll see something like this:



You don't need to do anything else. Not even in Nt7.

DETAILED: Settings

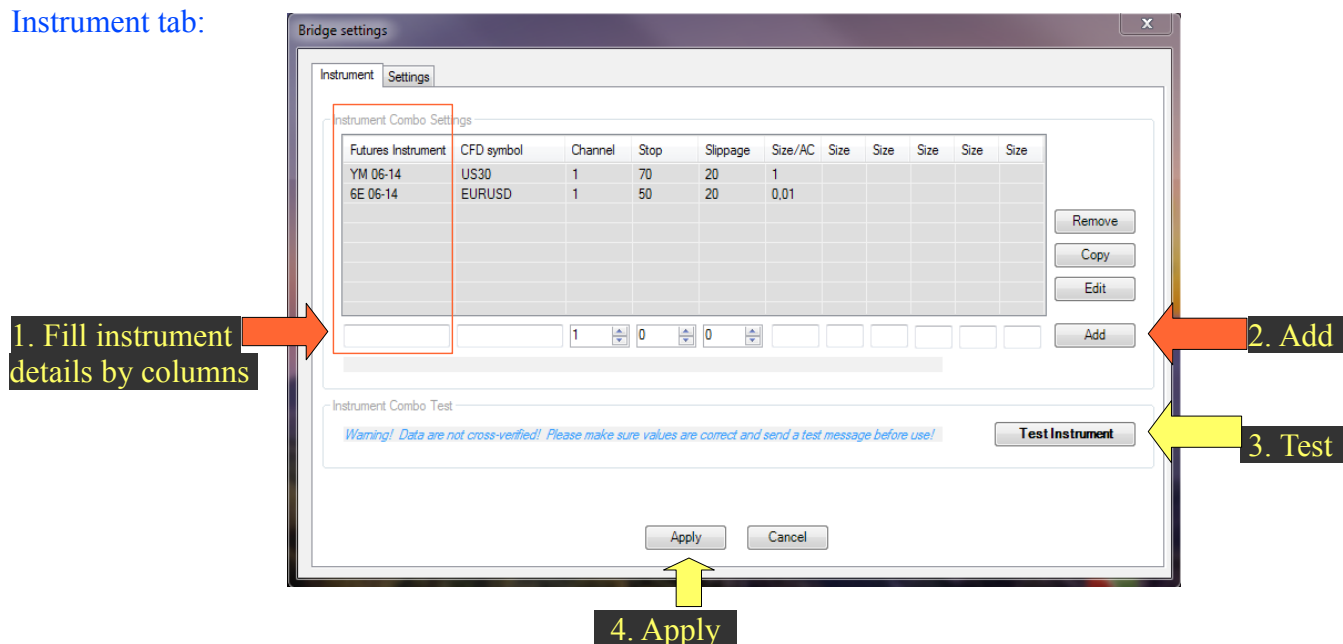
in NINJATRADER

NinjaTrader handles all the settings in a central settings panel.

You can open this menu 3 ways:

- When you attach it to a new indicator, it automatically opens on shift+click on the chart
- You can open it from the default settings menu of the indicator (not recommended)
- Doubleclick left (on the different colored rectangle) from your size buttons (on the first start it is 0)

Instrument tab:



Column details:

Futures instrument: the symbol and month of the futures symbol. eg: 6E 03-13

CFD Symbol: the EXACT name of the CFD/Forex symbol. Case sensitive.

Channel: leave it on 1. *You can control different Mt4 platforms on different channels. One instrument can control one Mt4 platform.*

Stop: An automatic safety-stoploss (denoted in pipettes) will be placed when entering into a position. *This stopLoss is NOT controllable from NT7, and is stored on your MT4 retail broker's server, so set it accordingly.*

When any of your programs/your power/ your net fails you'll still have a safety net. IT IS STRONGLY ADVISED TO TURN SAFETY STOP ON.

Naturally if an exit level set on NT7 triggers sooner, the order will be closed at that level, so you can close your order from NT7 closer, but not further than this stopLoss distance.

Slippage: (denoted in pipettes) if you get a requote the program will retry the order within the set ticks. If price has moved further than this, you will get a pop-up window if you want to retry. (the error window disappears in 10 seconds, so execution won't be halted forever if you are not around to click cancel)

Stop and Slippage values are NOT in TICKS but in pipettes, meaning if your retail broker uses +1 decimal for the instrument compared to futures (eg.: 5 for EURUSD) then 30 pipettas

will equal 3 real ticks.

Sizes: You can control the position size panel from here.

Applying the settings will immediately set all tools of the same instrument accordingly.

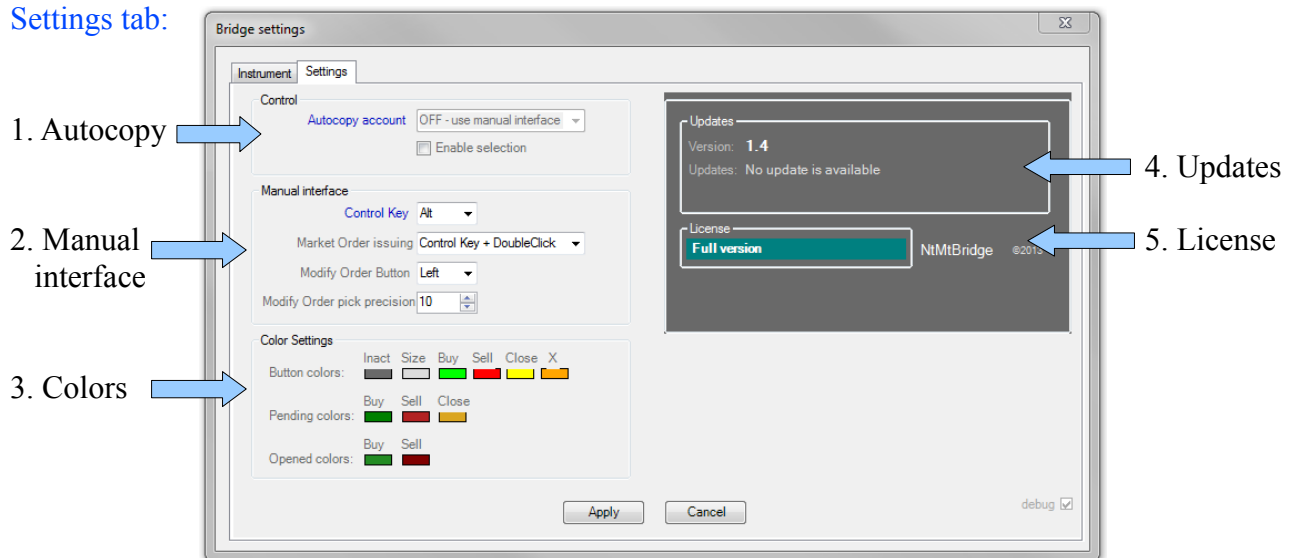
You can add negative sizes as well, so that you can distract later.

Test instrument: this button will send a test message to MT4. PLEASE PERFORM THIS STEP!

Warnings mean that you should double check your settings. There may be something you are not aware of.

Errors mean errors. You will be able to use the tool, but you will certainly get execution errors. Fix them before using the tool further.

Settings tab:



1. Autocopy: You can select an account in NT7 from which the positions will be copied to MT4.

Make sure you understand the following:

MT4 positions are updated each time when there is a change in NT7 positions!

When there is a change in NT7 positions, the ACTUAL position is sent to MT4 which then opens and closes until the two positions match.

Therefore DO NOT manually open and close MT4 positions SEPARATELY!

If there was an error in MT4 while opening that position will be missing!

DO NOT use this feature unattended with robots (as of now)

DO TRY this feature EXTENSIVELY on DEMO accounts!

If autocopy is enabled, the manual interface cannot be used.

However you can use built-in charttrader of NT7, or the SuperDOMS, or even a robot (with personal supervision).

MAKE SURE that all the instruments you wish to copy are listed and set in the Instrument tab of the tool's settings panel!

Unlike with the manual interface **One running indicator** on ANY charts in NT7 is enough for copy any of your accounts.

2. Manual interface

You can set the **control key**(which you need to hold while pressing your mouse button to issue an order)

You can enable **market orders** and select a way of issuing them here.

Once you selected a method, you will need to apply that method ON THE APPROPRIATE MODE KEY.

eg: if you want to issue a quick buy order: hold control key, and doubleclick on B button.

You can change the button (Middle or Left) you want to modify your orders with.

You can set how precise (in pixels) the pickup of an existing order line should be.

It now works pixel-based on all timeframe charts.

You can set the colors of your buttons/order lines here as well.

3. Updates

If there is an update you will be informed here.

If it is an important update (eg. a bugfix) you will be also notified by a pop-up window.

4. Licensing

If you bought a license you can activate it here. From the moment of activation you can use the tool without any restrictions.

One license is valid for one machine.

in [MT4](#)

Press F3 in your MT4 platform, and you can set the channel. You need to change it only if you would like to send an instrument to a different MT4 platform.

[Feedback Module](#)

If feedback module is enabled, you can change the refresh interval in **MT4** by pressing F3. Feedback is time based and runs independent from incoming ticks.

In **NT7** you can decide on each chart if you want the feedback module to show opened positions by setting the *ShowMarks* value in the indicator menu of each chart to true (showing) or false (not showing)

DETAILED: Manual Usage

6. Available modes:



or



B: buy mode

S: sell mode

C: close mode

x: close all open positions on instrument. Comes up, when C is pressed. Effect is INSTANT.

0: cancel all tool-orders

Issue an order: select a mode and press your set Control Key (Shift by default) + left click on the chart.

Modify an order: middle click on it and drag-n-drop.

Cancel an order:

- issue a negative size order on it
- issue an opposite order on it
- control+left click on it, when no mode is active

Orders can be combined (close and open an other one, add diferent orders together, etc.)

Make sure BOTH MT4 and NT7 are RUNNING while there is an active order.

ABOUT THE ORDERS:

The placed orders on your Ninja charts are **Virtual orders**. This means that NT7 monitors the set levels, and when they are hit, an instant market order is sent to MT4. The orders are not placed on MT4.

The deal is you are watching Futures charts and get filled on the CFD/Forex charts.

I have been using this method for years now and it works great. Most of the time I end better than if I had used the CFD/Forex charts by themselves.

Why? Because Futures market is the regulated one, so OTC market makers of CFD/Forex markets can only lag behind, but can't go ahead. So you have some milliseconds of advantage.

This method has some +s and -s aside from the speed and ease of one-click chart trading and being able to use the advanced charting of NT7.

Advantages:

- your retail broker doesn't see your orders (you are not exposed to stop-hunting).
- you can place your pending orders wherever you want (no stop minimum levels).
- futures market moves together with forex/cfd markets, but sometimes the speed of the tool can win you a tick.

Disadvantages:

- Both of NT7 and MT4 must run when there is an active pending order.
- You are exposed to quotes.